

State of Wyoming Corner Record

(In compliance with the CORNER PERPETUATION AND FILING ACT, Wyoming Statutes, 1977, Section 36-11-101, et. seq., and the Rules and Regulations of the Board of Registration for Professional Engineers and Professional Land Surveyors)

Reverse side of this form may be used if more space is needed.

Record of original survey and citation of source of historical information (if corner is lost or obliterated). Description of corner monumentation evidence found and/or monument and accessories established to perpetuate the location of this corner. Sketch of relative location of monument, accessories, and reference points with course and distance to adjacent corner(s) (if determined in this survey). Method and rationale for reestablishment of lost or obliterated corner.

G.L.O. Notes: U.S. Deputy Surveyor, John B. Thomas, October, 1870; 80.00 Chains... Set a Limestone 18 x 15 x 6 for corner common to Sec. 13 & 24 - 18 & 19.

Found: 60d spike per C.L.C.R. form filed February 18, 1977, by Mr. William D. Braman, Wyoming L.S. 566. The "CR" stone Southwest per said C.L.C.R. form was found disturbed.

Set: At the found 60d nail I set a No. 5 x 24" rebar with marked 2" aluminum cap. From the corner point @ 37.58' northwesterly, I set a p.k nail in the east face of a wood fence corner post and at 28.75 feet easterly I set a p.k nail in the south face of wood fence post.

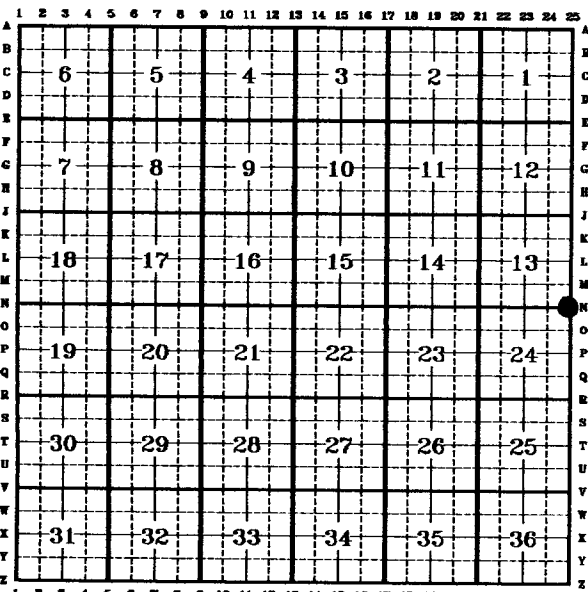
See back of this sheet for ties to adjacent monuments.

Aluminum Cap Markings
T.15N.
R S 13 | S 18 R
64 S 24 | S 19 63
W 1994 W
PLS 2927

200702
LARAMIE COUNTY CLERK
CHEYENNE, WY.
97 APR 7 PM 4 40

Date of Field Work: 16, March, 1994 Office Reference: EXXON Looseleaf, Pg. 64A

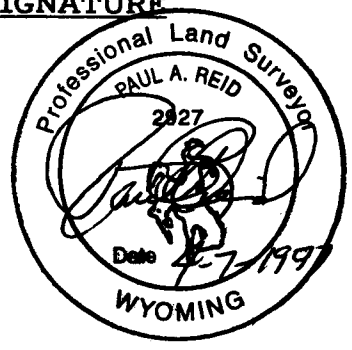
CROSS INDEX DIAGRAM



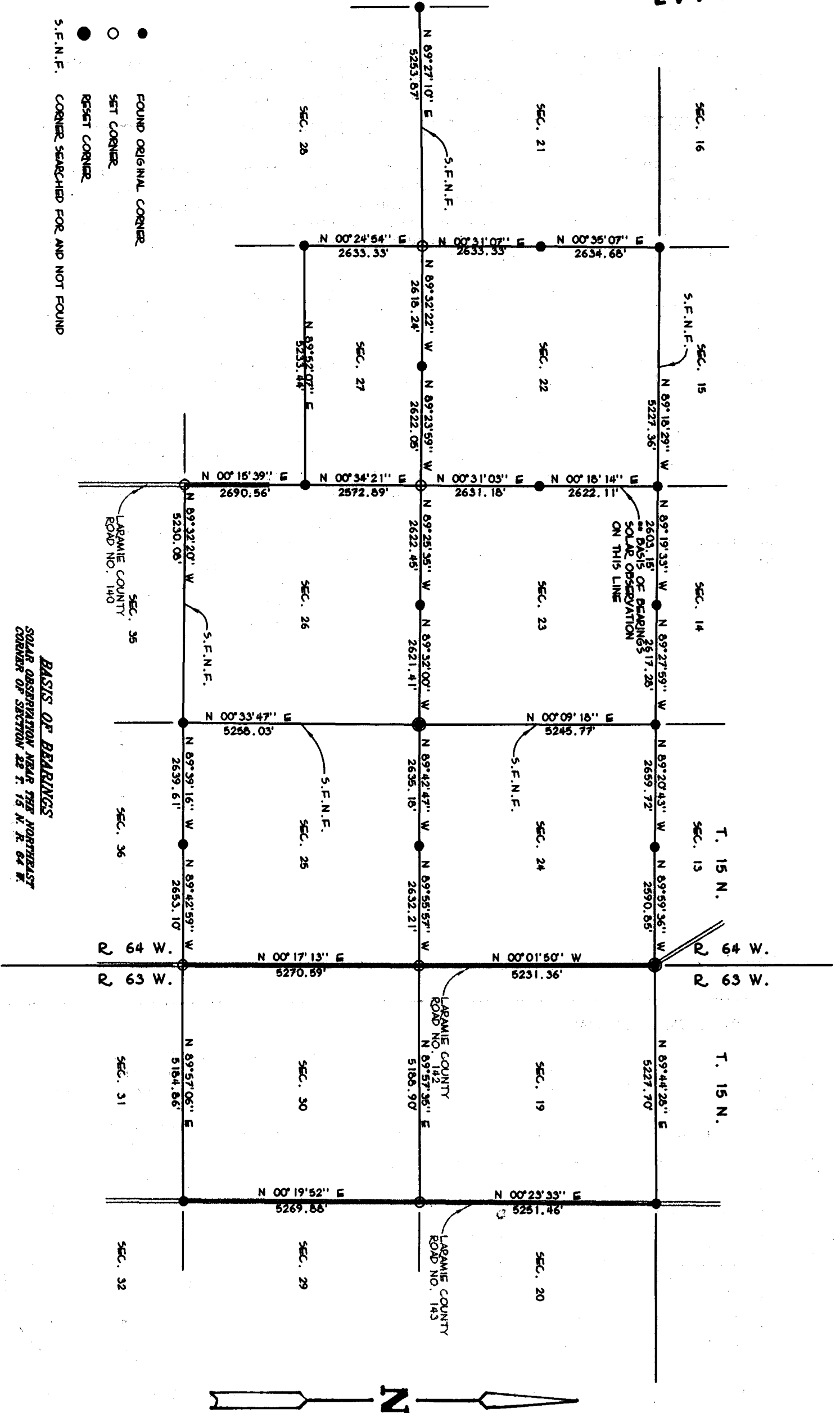
Firm/Agency, Address
Paul A. Reid, A.V.I.p.c.
2035 Westland Road
Cheyenne, WY 82001

Telephone Number:
(307)-634-6017

This corner record was prepared by me or under my direction and supervision.
SEAL & SIGNATURE



Corner Name: NE Cor. Section: 24 T 15N R 64W; 6TH P.M. Cross-Index No.: N-25



- FOUND ORIGINAL CORNER
- SET CORNER
- RESET CORNER
- S.F.N.F. CORNER SEARCHED FOR AND NOT FOUND

BASIS OF BEARINGS
 SOLAR OBSERVATION NEAR THE NORTHEAST
 CORNER OF SECTION 22 T. 15 N. R. 64 W.